

# HOW TO

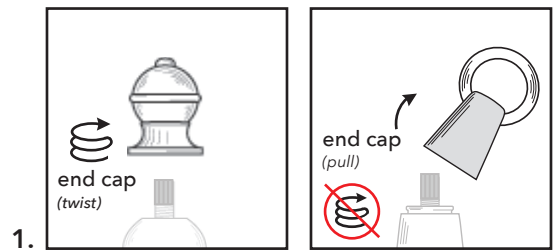
---

## ADJUST FLAME

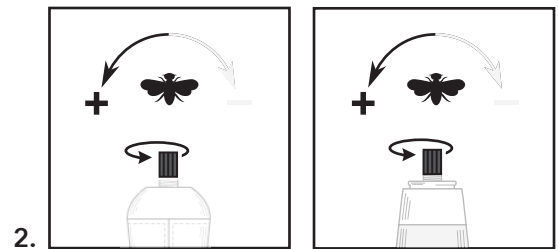
NOTE: *Adjusting the flame too high may cause failure to ignite.*

---

1. Depending on the style of your lighter, twist *or* use leverage to remove the end cap.\*  
*\*Damage sustained by improperly removing the end cap on Geneva lighters will **NOT** be covered under warranty.*



2. **Increase** the flame by turning the adjustment valve left/counter-clockwise.



3. **Decrease** the flame by turning the adjustment valve right/clockwise.

